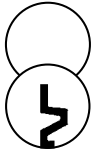


# Product Data Sheet

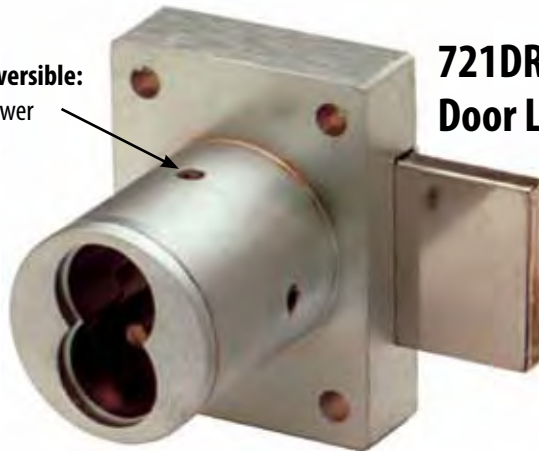
## 721 Series

*IC Core: Small Format  
Door & Drawer Cabinet Locks*



For ARROW  
interchangeable core  
cylinders

Field reversible:  
door/drawer



**721DR  
Door Lock**



**10-057 strike**  
.65" plastic bar strike



**10-054 bar strike 1/4"**  
1/4" plastic bar strike

**10-350 internal spacers**

For a flush fit on varying material thicknesses



**721DW  
Drawer Lock**



Field reversible:  
door/drawer

Accepts 6 or 7 pin small  
format IC cores

# 721 Series

## IC Core: Small Format Door & Drawer Cabinet Locks



### 721DR Cabinet Door Lock

**Reversible:** Easily reversible via set-screw  
**Testing:** Passed ANSI/BHMA A156.11, Grade 1 testing  
**US Patent Nos:** 4,899,563; 4,920,774  
**Body:** Zinc die cast  
**Bolt:** Brass, 3/4" projection  
**Barrel length:** 1-1/4" or 1-3/8"  
**Barrel diameter:** 1-1/8"  
**Finish:** US26D (satin chrome), US26 (polished chrome), US3 (bright brass) or US10B (oil rubbed bronze)  
**Cylinder:** Not included, accepts standard small format IC cores as manufactured by Arrow or other compatible small format IC core manufacturers  
**Keying:** n/a  
**Key retaining:** Available

### 721DW Cabinet Drawer Lock

**Reversible:** Easily reversible via set-screw  
**Testing:** Passed ANSI/BHMA A156.11, Grade 1 testing  
**US Patent Nos:** 4,899,563; 4,920,774  
**Body:** Zinc die cast  
**Bolt:** Brass, 3/4" projection  
**Barrel length:** 1-1/4" or 1-3/8"  
**Barrel diameter:** 1-1/8"  
**Finish:** US26D (satin chrome), US26 (polished chrome), US3 (bright brass) or US10B (oil rubbed bronze)  
**Cylinder:** Not included, accepts standard small format IC cores as manufactured by Arrow or other compatible small format IC core manufacturers  
**Keying:** n/a  
**Key retaining:** Available

### Includes:

- 10-350 plastic spacers (qty 3)
- 10-054 1/4" plastic bar strike
- 10-057 .65" plastic bar strike
- 725-PA plastic actuator to operate lock without core
- 721DR-11 door prong driver
- 721DW-11 drawer prong driver

### Available separately:

- 10-348 - 1/4" thick plastic spacer
- 10-349 - 1/2" thick plastic spacer
- 12-2-26D heavy duty angle strike
- 12-4-ZP frameless drawer strike
- 10-352 slotted strikes
- TR78 trim ring

### ETS1 Reinforcing trim spacer (optional):

- External metal 1/4" trim spacer allows for an attractive flush mounting of the cabinet lock face
- Increases security of installation through reinforcement of cabinet face and direct connection of lock mounting screws to External Trim Spacer's binder posts
- Available in US3 and US26D finishes
- Includes mounting screws

### ETST1 Reinforcing trim spacer template (optional):

- Allows for proper mounting hole placement of External Trim Spacer
- Can be used as a 1/8" shim spacer
- Available in US3 and US26D finishes

ETS1 Reinforcing Trim Spacer



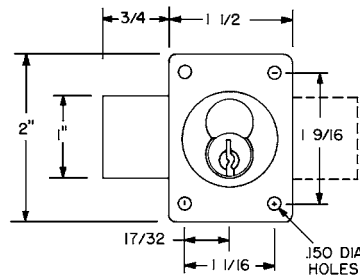
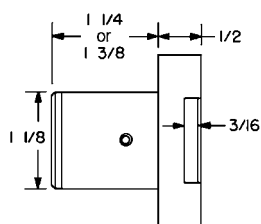
ETST1 Reinforcing Trim Spacer Template



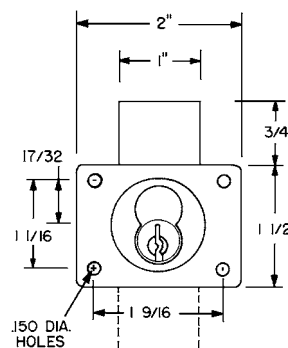
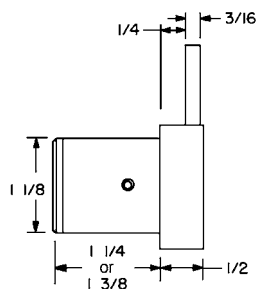
Trim spacers and templates can be used for through-bolt mounting of Olympus cabinet locks. Optional trim spacers and templates are available separately.

U.S. Patent No. D490,686

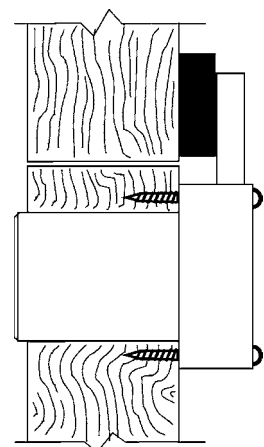
## 721DR Series Dimensions



## 721DW Series Dimensions



## Typical Installation



721DR - top view  
721DW - side view