

Product Data Sheet

B7 Series

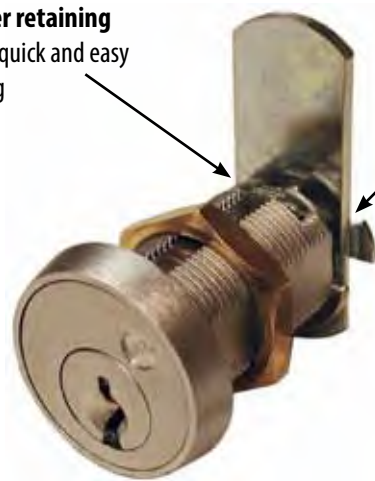
3/4" Utility Cam Lock

Best Keyway (A, B, E, F, G, J, K, L and R)

B7 Series Features:

- Cylinder**—7 pin cylinder available in A, B, E, F, G, J, K, L or R keyways
- Easy rekeyability**—Allows for a quick installation and increased productivity
- Non-handed**—Field reversible locking positions: right-hand, left-hand, vertical and inverted
- Only 2 cams required**—Ships with reversible straight and offset cams that meet requirements of all locking positions
- Anti-rotation plate**—Eliminates lock rotation, prevents loosening of fixing nut, and provides additional security in particleboard applications
- Finger pull**—Optional finger pull eliminates need for additional cabinet pull, mounts on front of lock
- Lost motion**—key removable in locked or unlocked position, optional key-retaining shifters available
- Number plate kit**—Optional number plate kit allows stamping on ring instead of lock face

Cylinder retaining clip for quick and easy rekeying

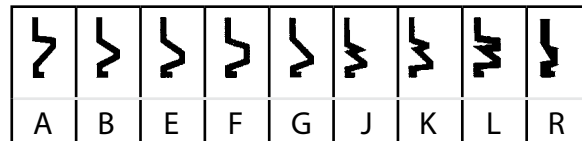


Patented cam shifting mechanism for maximum flexibility

Anti-rotation plate eliminates lock rotation and prevents loosening of fixing nut

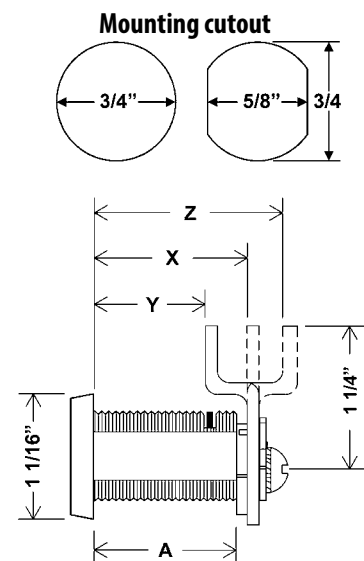


B7 AVAILABLE KEYWAYS



B7 Series Dimensions

With Trim Collar	
For Mat. Thickness	7/8"
Straight Cam (X)	1-3/16"
Inbent Cam (Y)	7/8"
Outbent Cam (Z)	1-1/2"
Cylinder Length (A)	1-1/8"



Rainer Security Products Ltd

Unit B6, Rudford Industrial Estate,
Ford, Arundel, West Sussex BN18 0BF

+44 (0) 1903 732211 ✉ sales@rainersecurity.co.uk
www.rainersecurity.co.uk



B7 Series

3/4" Utility Cam Lock

Best Keyway (A,B,E,F,G,J,K,L and R)



B7 Series Cam Lock

Rekeyable: Easily rekeyable via patented retainer staple cylinder removal mechanism
Testing: Passed ANSI/BHMA A156.11, Grade 1 testing

US Patent Nos: 5,038,589; 5,737,950

Body: Zinc die cast

Barrel length: See chart below

Barrel diameter: 3/4"

Across flats: 5/8"

Finish: US26D (satin chrome)

Cylinder: Best A, B, E, F, G, J, K, L or R keyway, drilled for 7 pins

Stock keying: 0-Bit

Custom Keying: Available per customer specifications.

Includes:

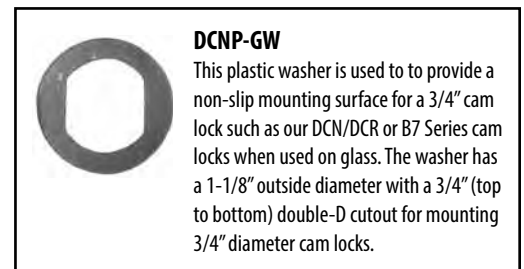
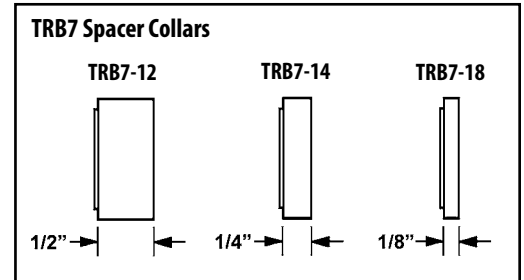
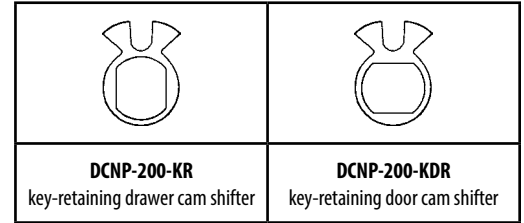
- DCNP-500-ARP stabilizer plate
- DCNP-100-SC straight cam
- DCNP-100-BC offset reversible cam
- DCNP-200-OCD lost motion cam shifter
- Other accessories sold separately.

Available Separately:

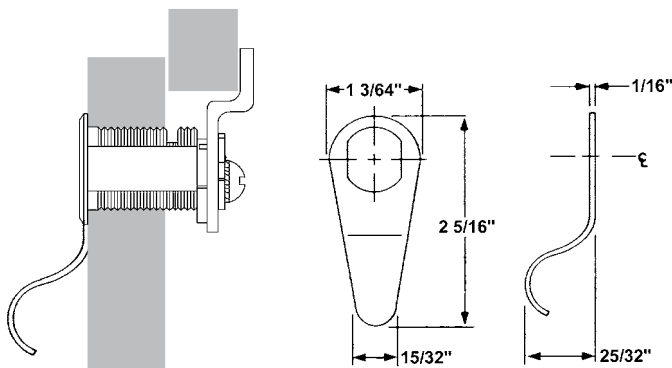
Item #	Description / Packed Each
DCNP-500-ARP	Anti-rotation plate
DCNP-300-FP	Finger pull
DCNP-200-KR	Key-retaining shifter (Drawer)
DCNP-200-KDR	Key-retaining shifter (Door)
T37DC-NP	Number plate ring
DCNP-GW*	Glass washer
DCNP-SPW	Pronged wood washer

*DCNP-GW is a plastic washer with a peel-and-stick adhesive back used for mounting DCN on glass.

Item #	Description / Packed Each
Straight Cams	
DCNP-HD-875	7/8" long straight cam
DCNP-100-SC	1-1/4" long straight cam
DCNP-100-SC2	1-3/4" long straight cam
DCNP-100-LC	3" long straight cam
Offset Cams are reversible and can be used in either the inbent or outbent position.	
DCNP-100-BC	1-1/4" long cam, 5/16" offset
DCNP-100-BC5	1-1/4" long cam, 1/2" offset
DCNP-100-HC1	1-1/2" long hook cam, 5/16" offset
DCNP-100-HD	1-7/16" long cam, 1/2" offset
DCNP-100-HD2	1-3/4" long cam, 5/16" offset
DCNP-100-HD3	1-1/8" long cam, 5/16" offset
DCNP-100-LBC	1-1/2" long cam, 5/16" offset
DCNP-100-WB	Specialty cam



DCNP-300-FP Eliminates need for additional cabinet pull.
Mounts on front of cam lock.



Typical Installations

